

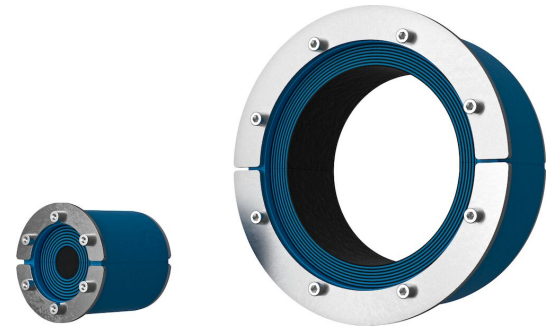


Roxtec RS seal

Penetration seal for a single cable or pipe.

The Roxtec RS is a seal for single cables or pipes in metal sleeves or existing holes. The entry seal has two halves with removable layers making it adaptable to cables and pipes of different sizes. The design of the transit makes it easy to install around existing cables or pipes.

- Rodent resistant
- Quick and easy to install



Product characteristics



Fire rated



Watertight



Gas-tight

Structure of installation



Metal



Concrete

Mounting type



Existing hole



Existing sleeve

Ratings & certificates

Fire

- A-CLASS according to IMO 2010 FTP Code
- E/EI rating according to EN 13501
- E/EI rating according to EN 45545 E30
- F/T rating according to UL 1479
- H-CLASS according to IMO 2010 FTP Code + HC fire load curve
- Jet fire according to ISO 22899-1 and OTI 95634

Tightness

- Gas: 2.67 bar (catastrophic)
- Water: 4 bar (catastrophic)

Sealing components

Sealing components



RS seal



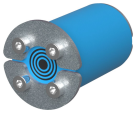
Lubricant

For detailed information, please visit [roxtec.com](https://www.roxtec.com).

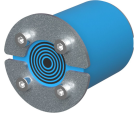


Pre-configured transit kits

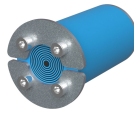
mm/kg



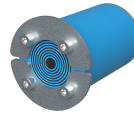
RS 25 AISI316



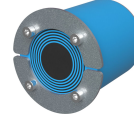
RS 31 AISI316



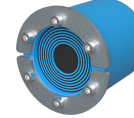
RS 43 AISI316



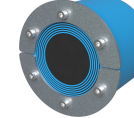
RS 50 AISI316



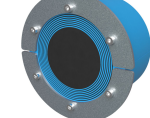
RS 68 AISI316



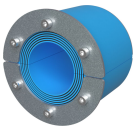
RS 75 AISI316



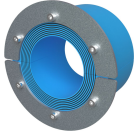
RS 100 AISI316



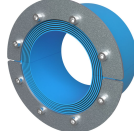
RS 125 AISI316



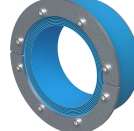
RS 100 AISI316 WOC



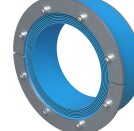
RS 125 AISI316 WOC



RS 150 AISI316 WOC



RS 175 AISI316 WOC



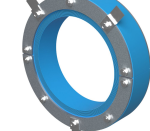
RS 200 AISI316 WOC



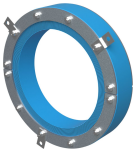
RS 225 AISI316 WOC



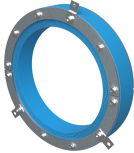
RS 250 AISI316 WOC



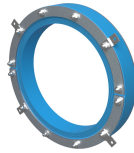
RS 300 AISI316 WOC



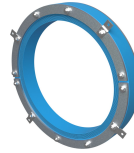
RS 350 AISI316 WOC



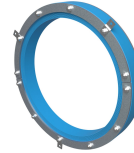
RS 400 AISI316 WOC



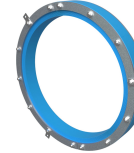
RS 450 AISI316 WOC



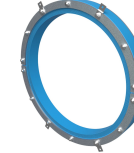
RS 500 AISI316 WOC



RS 550 AISI316 WOC



RS 600 AISI316 WOC



RS 644 AISI316 WOC

Product	Configuration	Aperture dimensions Ø	Weight	Art. no
RS 25 AISI316	1x (3.6-12.0)	25 - 26	0.08	RS00100251023
RS 31 AISI316	1x (4.0-17.0)	31 - 32	0.09	RS00100311023
RS 43 AISI316	1x (4.0-23.0)	43 - 45	0.24	RS00100431023
RS 50 AISI316	1x (8.0-30.0)	50 - 52	0.31	RS00100501023
RS 68 AISI316	1x (26.0-48.0)	68 - 70	0.5	RS00100681023
RS 75 AISI316	1x (24.0-54.0)	75 - 77	0.6	RS00100751023
RS 100 AISI316	1x (48.0-70.0)	100 - 102	1	RS00101001023
RS 125 AISI316	1x (66.0-98.0)	125 - 127	1.6	RS00101251023
RS 100 AISI316 WOC	1x (48.0-70.0)	100 - 102	0.8	RS00001001023
RS 125 AISI316 WOC	1x (66.0-98.0)	125 - 127	1.4	RS00001251023
RS 150 AISI316 WOC	1x (93.0-119.0)	150 - 152	1.6	RS00001501023
RS 175 AISI316 WOC	1x (119.0-145.0)	175 - 177	2.3	RS00175750021
RS 200 AISI316 WOC	1x (138.0-170.0)	200 - 203	2.7	RS00200750021
RS 225 AISI316 WOC	1x (151.0-181.0)	225 - 228	3.2	RS00002250021
RS 250 AISI316 WOC	1x (176.0-206.0)	250 - 253	3.3	RS00002500021
RS 300 AISI316 WOC	1x (206.0-236.0)	300 - 303	5.7	RS00003000021
RS 350 AISI316 WOC	1x (244.0-286.0)	350 - 353	7.2	RS00003500021
RS 400 AISI316 WOC	1x (294.0-336.0)	400 - 403	9.4	RS00004000021
RS 450 AISI316 WOC	1x (344.0-386.0)	450 - 453	10.7	RS00004500021
RS 500 AISI316 WOC	1x (394.0-436.0)	500 - 503	13	RS00005000021
RS 550 AISI316 WOC	1x (444.0-486.0)	550 - 553	14.4	RS00005500021
RS 600 AISI316 WOC	1x (494.0-536.0)	600 - 603	15.7	RS00006000021
RS 644 AISI316 WOC	1x (538.0-580.0)	644 - 647	17	RS00006440021



The product information provided by Roxtec does not release the purchaser of the Roxtec system, or part thereof, from the obligation to independently determine the suitability of the products for the intended process, installation and/or use.

Roxtec gives no guarantee for the Roxtec system or any part thereof and assumes no liability for any loss or damage whatsoever, whether direct, indirect, consequential, loss of profit or otherwise, occurred or caused by the Roxtec systems or installations containing components not manufactured by an authorized manufacturer and/or occurred or caused by the use of the Roxtec system in a manner or for an application other than for which the Roxtec system was designed or intended.

Roxtec expressly excludes any implied warranties of merchantability and fitness for a particular purpose and all other express or implied representations and warranties provided by statute or common law. User determines suitability of the Roxtec system for intended use and assumes all risk and liability in connection therewith. In no event shall Roxtec be liable for indirect, consequential, punitive, special, exemplary or incidental damages or losses.

The Roxtec products are offered and sold in accordance with the conditions of the Roxtec General Terms of Sales. The latest version of the Roxtec General Terms of Sales can be downloaded from <https://www.roxtec.com/en/about-us/about-roxtec/general-terms-of-sales/>

We reserve the right to make changes to the product and technical information without further notice. Any errors in print or entry are no claims for indemnity. The content of this publication is the property of Roxtec International AB and is protected by copyright.

This document was generated on: 2024-04-06